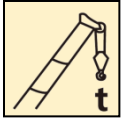
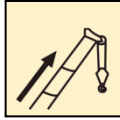


# 汽车起重机 / Truck Crane

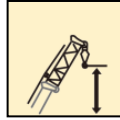
XCT30\_S



30 t



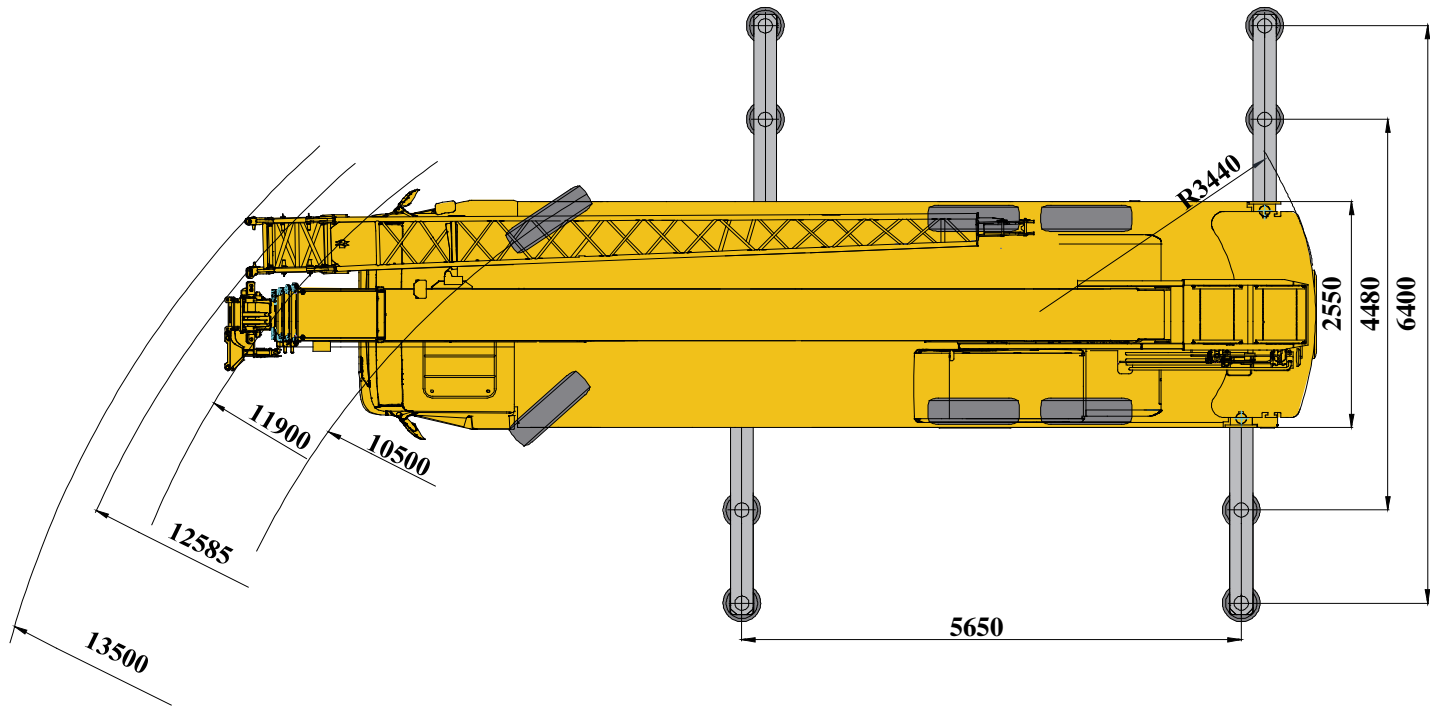
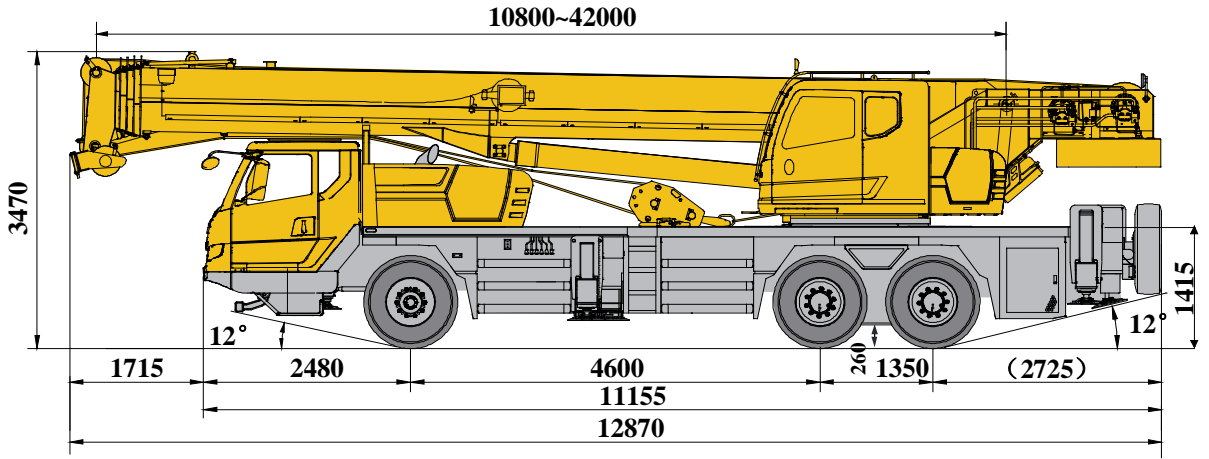
42 m



50.2 m





# 尺寸参数 Dimensions



# 起重性能表

## Lifting capacities


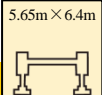


T 10.8~42.0m

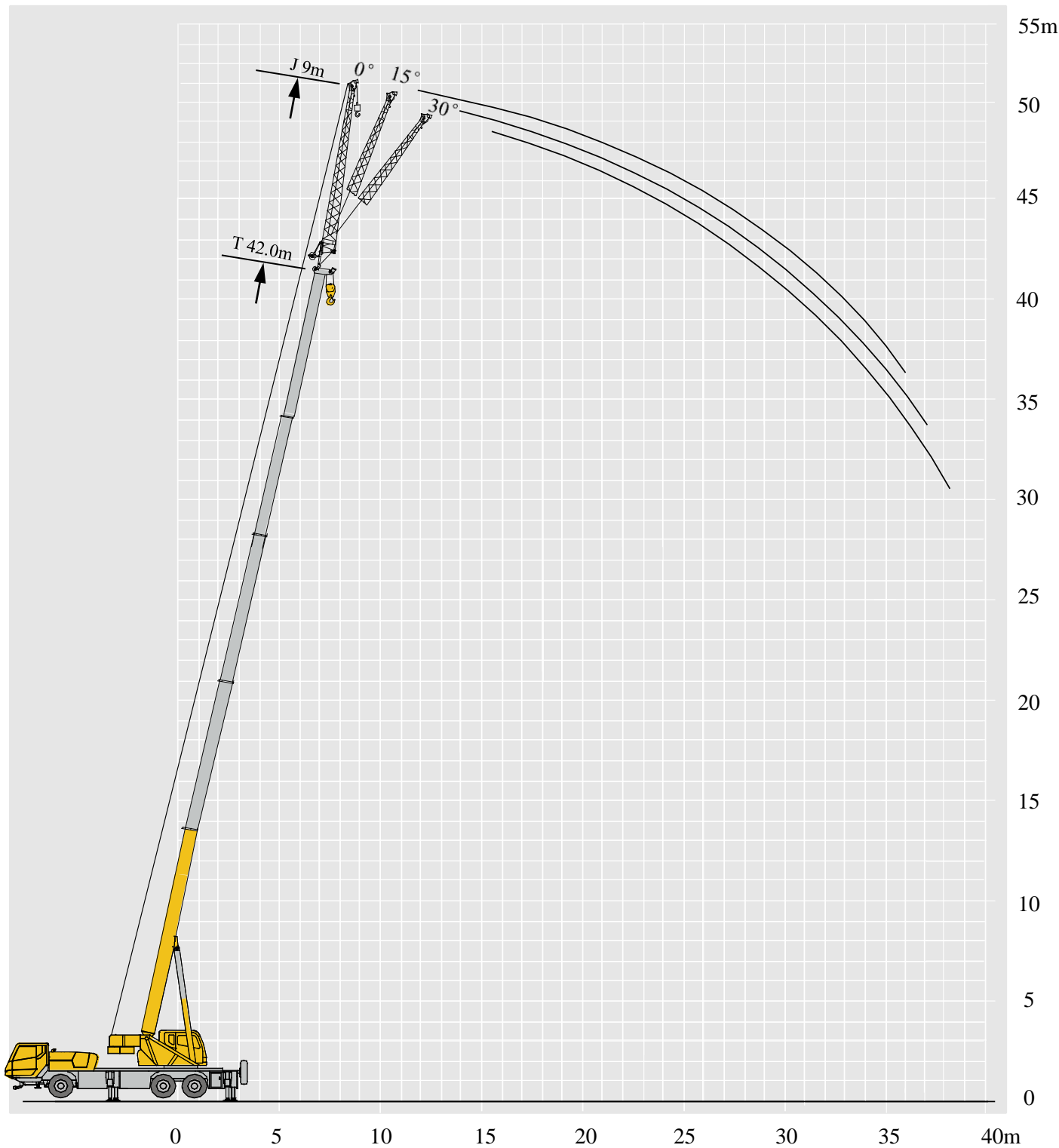
	 10.8-42.0m	 5.65m × 6.4m	 360°					
	10.8m	14.7 m	18.6m	24.45m	30.3 m	36.15 m	42.0m	
3	30000	25000						3
3.5	25000	25000						3.5
4	24800	24000	20400					4
4.5	23600	23000	19100	18600				4.5
5	23000	21500	18100	17800				5
5.5	21000	19400	17100	16800				5.5
6	19000	17500	16200	15900	12500			6
6.5	17000	15900	15400	15100	12500			6.5
7	15000	14500	14600	14500	12500	9000		7
8	13000	12300	13000	13300	12200	9000		8
9		10500	11000	11800	11300	9000		9
10		9000	8900	9700	10200	8500	6100	10
11		7400	7300	8000	8500	8000	6000	11
12			6000	6800	7200	7500	5800	12
13			5000	5700	6200	6500	5600	13
14			4200	4900	5300	5600	5200	14
15				4200	4700	4900	4700	15
16				3700	4100	4300	4500	16
18				2700	3100	3400	3600	18
20					2400	2700	2900	20
22					1800	2100	2300	22
24					1400	1700	1800	24
26						1300	1500	26
28						1000	1100	28
30							900	30
32							700	32

# 起重性能表

## Lifting capacities

T 10.8~42.0m



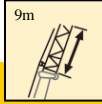
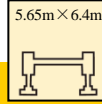



	 10.8-42.0m	 5.65m × 6.4m	 360°	 5t						
	16.65m	22.5 m	28.35m	34.2 m	20.55 m	26.4 m	32.25 m	38.1m		
3	19600								3	
3.5	19600								3.5	
4	19600	18750			19000				4	
4.5	19600	18750			18900				4.5	
5	19600	18000			17900	15600			5	
5.5	19000	17000	11600		17100	15600			5.5	
6	18000	16200	11600		16300	15200			6	
6.5	16200	15500	11600	8500	15500	14400	11500		6.5	
7	15200	14800	11200	8500	14900	13700	11500		7	
8	13800	13800	10200	8400	14200	12500	10600	7200	8	
9	12000	12700	9400	7800	12100	11500	9900	7200	9	
10	10400	10900	8800	7300	10000	10500	9200	7000	10	
11	8700	9200	8000	6800	8300	8800	8400	6600	11	
12	7400	7800	7600	6300	7000	7500	7800	6500	12	
13		6800	7100	5800	6000	6500	6700	6100	13	
14		6000	6200	5600	5200	5600	5900	5800	14	
15		5200	5500	5200	4500	4900	5200	5200	15	
16		4600	4900	4900	3900	4300	4600	4800	16	
18			3900	4100		3400	3600	3800	18	
20			3200	3300		2600	2900	3100	20	
22			2600	2800			2300	2500	22	
24				2300			1900	2000	24	
26				1900				1700	26	
28								1300	28	
30								1100	30	



# 起重性能表

## Lifting capacities

T 41.0m

	    			
	0°	15°	30°	
78	3000	2800	2100	78
75	3000	2500	1900	75
72	2900	2300	1800	72
70	2700	2250	1700	70
65	2200	2100	1600	65
60	1800	1600	1400	60
55	1200	1150	1050	55
50	800	750	700	50
45	450	450	450	45