













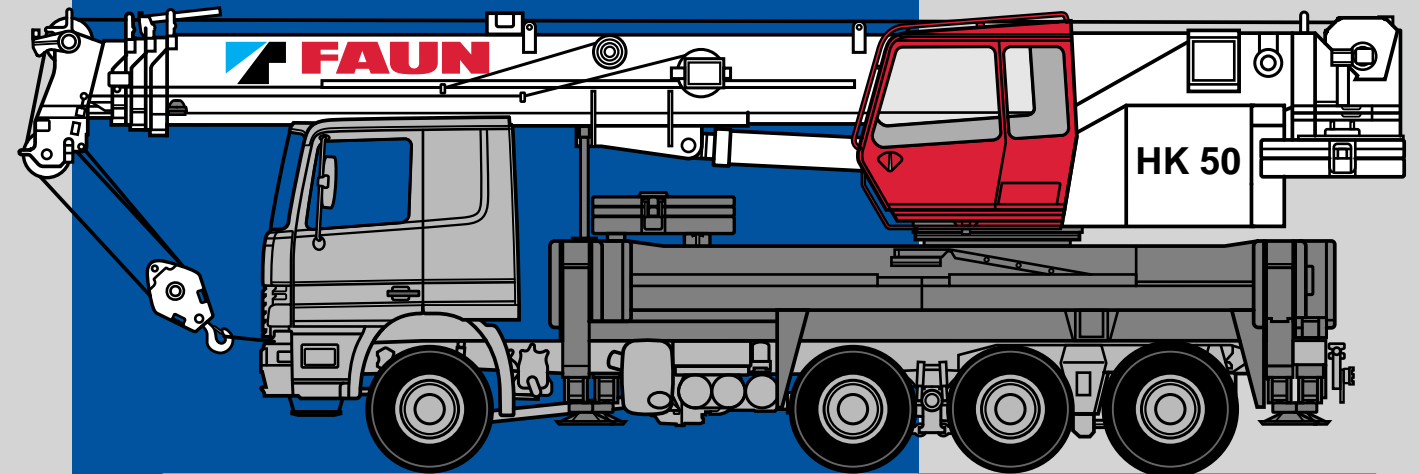
24

	SERVICE  → 
	(0) 91 23 95 50  (0) 17 18 11 43 24 
	(0) 91 23 18 51 55 (0) 91 23 18 52 19 (0) 91 23 30 85
	Service + Spare parts e-mail: service@tadanofaun.de e-mail: spareparts@tadanofaun.de
	D → 00 49
	A B CH DK F GB I N NL P
	E 07 49  S 00 949

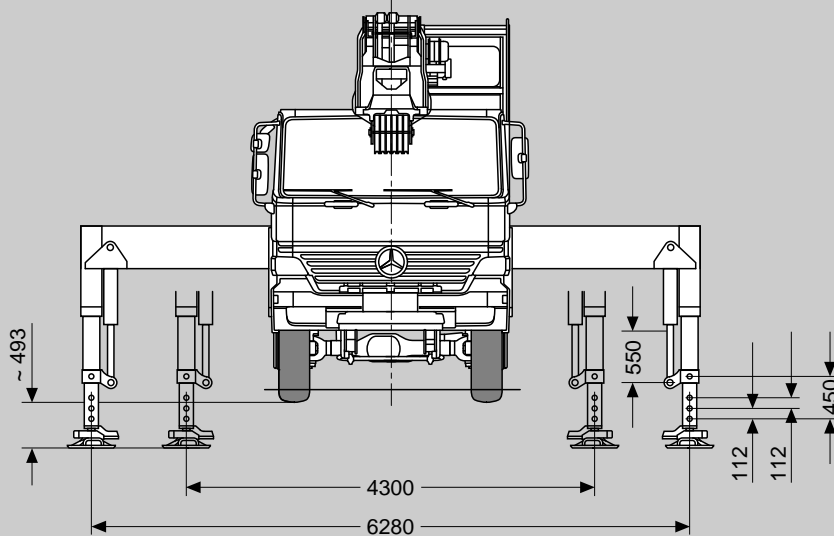
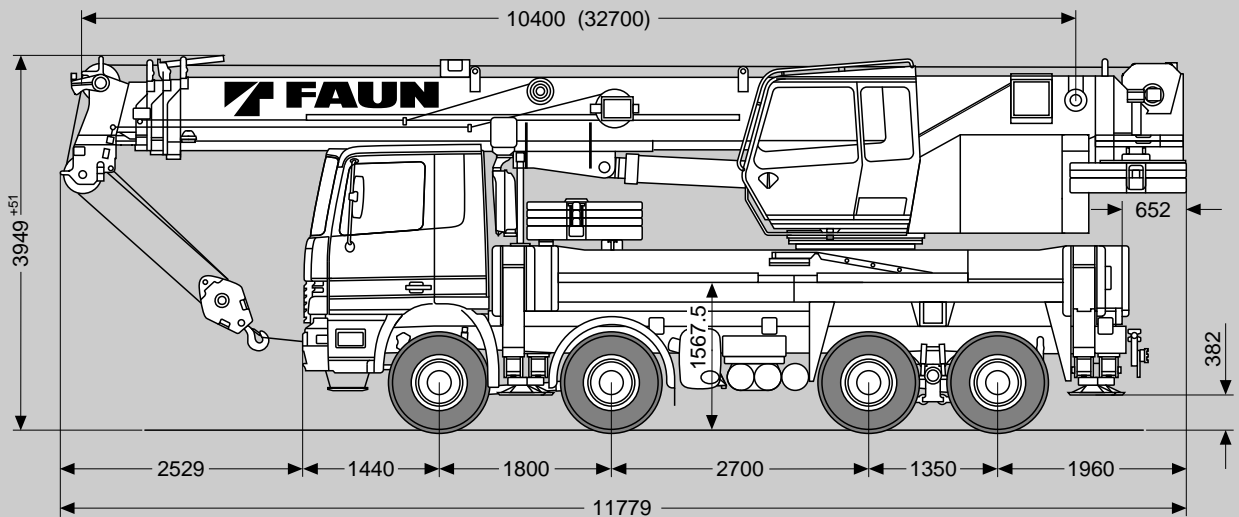
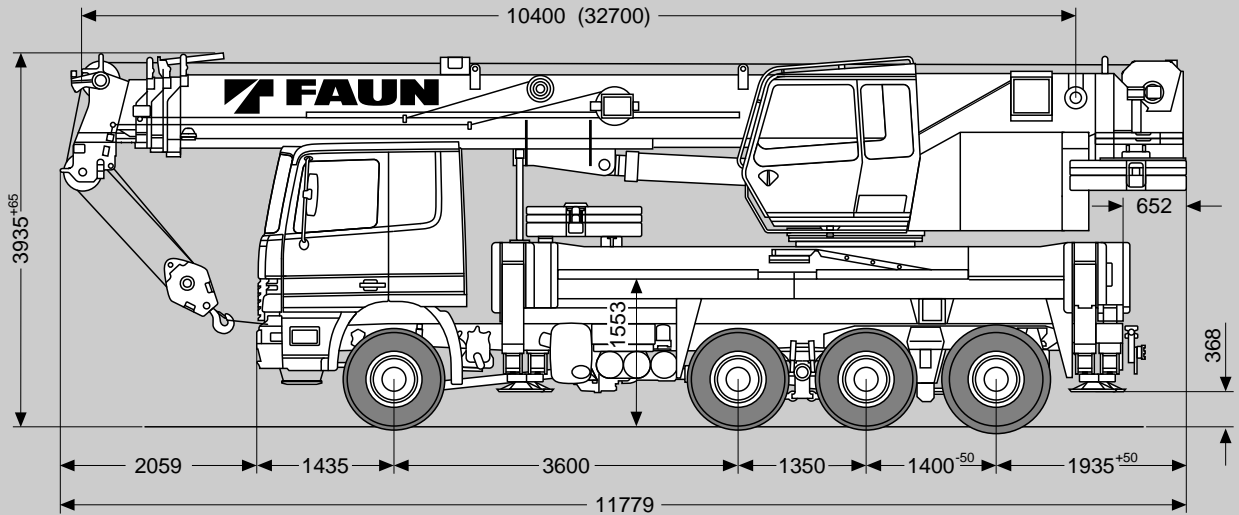
TADANO FAUN GmbH
 Postfach 10 02 64
 D-91205 Lauf/Germany
 Tel. (0) 91 23 95 50
 Fax (0) 91 23 30 85
<http://www.tadanofaun.de>
 e-mail: info@tadanofaun.de

ISO 9001

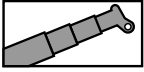
HK 50



Maße / Dimensions (mm)
 Gewichte / Weights
 Geschwindigkeiten / Speeds



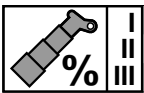
Tragfähigkeiten am Teleskopausleger Lifting capacities on telescopic boom



9.9t

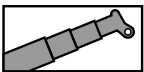
DIN

m	10.4 m	14.1 m	17.8 m	21.6 m	25.3 m	29.0 m	32.7 m
2.5	50.0						
3.0	44.3	30.0	30.0				
3.5	40.2	30.0	30.0				
4.0	36.8	30.0	30.0	20.0			
4.5	33.9	30.0	29.1	20.0	17.0		
5.0	31.4	30.0	26.8	20.0	17.0	16.0	
6.0	27.2	26.8	23.2	20.0	17.0	16.0	12.0
7.0	23.9	23.5	20.3	20.0	17.0	15.9	12.0
8.0	17.0	19.0	20.0	19.8	16.3	14.7	12.0
9.0		15.5	16.9	16.4	14.6	13.3	12.0
10.0		12.8	14.3	13.7	13.2	12.3	11.1
11.0		10.7	12.1	11.5	11.5	11.3	10.2
12.0			10.4	9.9	9.9	10.2	9.3
14.0			8.0	8.2	7.7	7.8	7.4
16.0				6.5	6.5	6.1	5.8
18.0				5.3	5.2	4.9	4.5
20.0					4.3	3.9	3.6
22.0					3.5	3.2	2.9
24.0						2.6	2.3
26.0						2.1	1.8
28.0							1.4
30.0							1.0



I
II
III

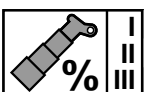
I	0	50	100	33	0	100	50	0	100	66	0	100	50	100
II	0	0	0	33	50	50	50	50	100	66	100	100	100	100
III	0	0	0	33	50	0	50	100	0	66	100	50	100	100



9.9t

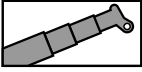
DIN

m	10.4 m	14.1 m	17.8 m	21.6 m	25.3 m	29.0 m	32.7 m
2.5	50.0						
3.0	44.3	30.0	30.0				
3.5	40.2	30.0	30.0				
4.0	36.8	30.0	30.0	20.0			
4.5	33.9	30.0	29.1	20.0	17.0		
5.0	31.4	30.0	26.8	20.0	17.0	16.0	
6.0	27.2	26.8	23.2	20.0	17.0	16.0	12.0
7.0	23.9	23.5	20.3	20.0	17.0	15.9	12.0
8.0	17.0	19.0	20.0	19.8	16.3	14.7	12.0
9.0		15.6	16.9	16.4	14.6	13.3	12.0
10.0		13.1	14.3	13.8	13.2	12.3	11.1
11.0		11.2	12.4	11.9	11.9	11.3	10.2
12.0			10.8	10.4	10.4	10.4	9.3
14.0			8.5	8.4	8.0	8.3	7.9
16.0				7.1	6.7	6.7	6.4
18.0				5.8	5.8	5.4	5.1
20.0					4.8	4.5	4.2
22.0					4.1	3.7	3.4
24.0						3.1	2.8
26.0						2.5	2.3
28.0							1.8
30.0							1.4



I
II
III

I	0	50	100	33	0	100	50	0	100	66	0	100	50	100
II	0	0	0	33	50	50	50	50	100	66	100	100	100	100
III	0	0	0	33	50	0	50	100	0	66	100	50	100	100



9.9t

DIN

